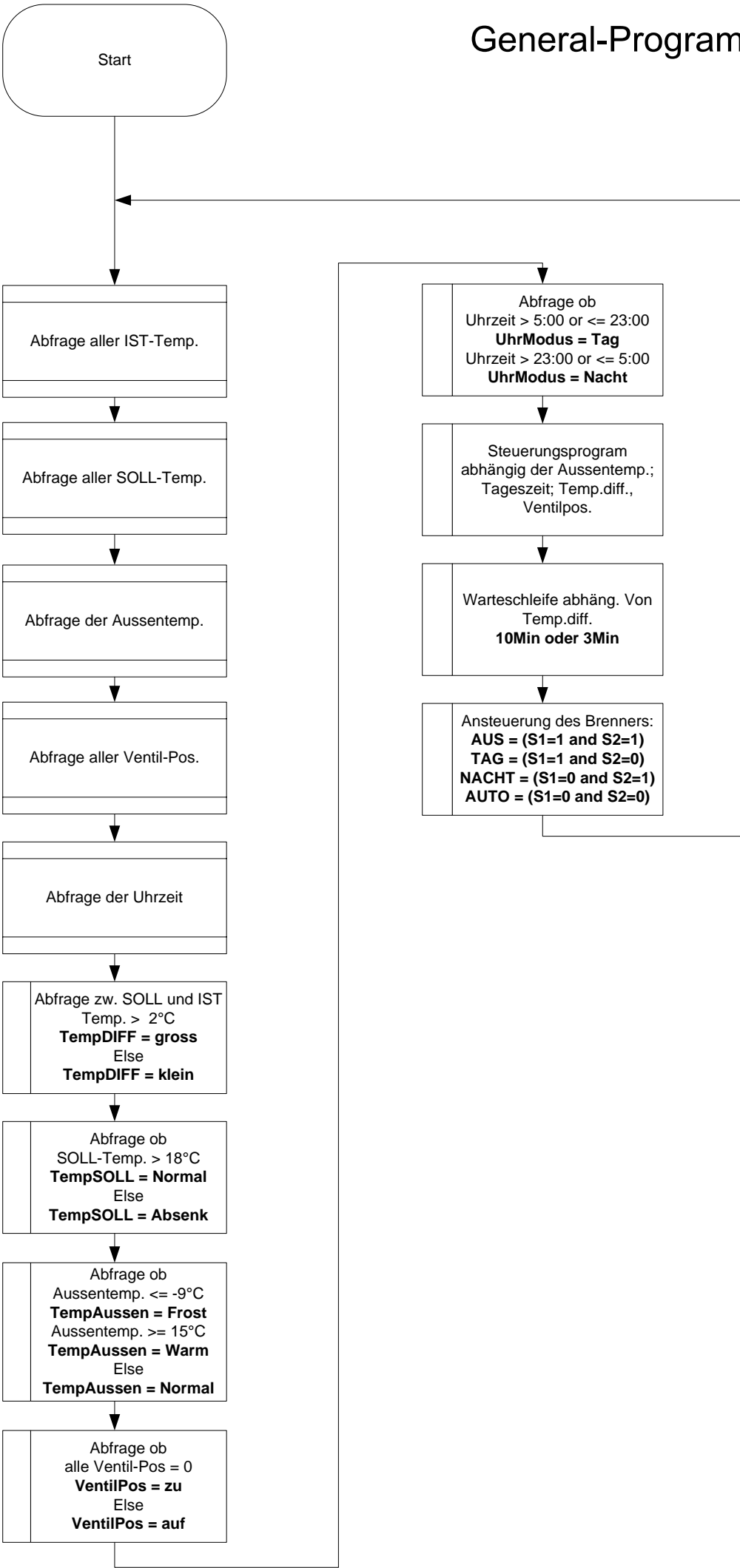
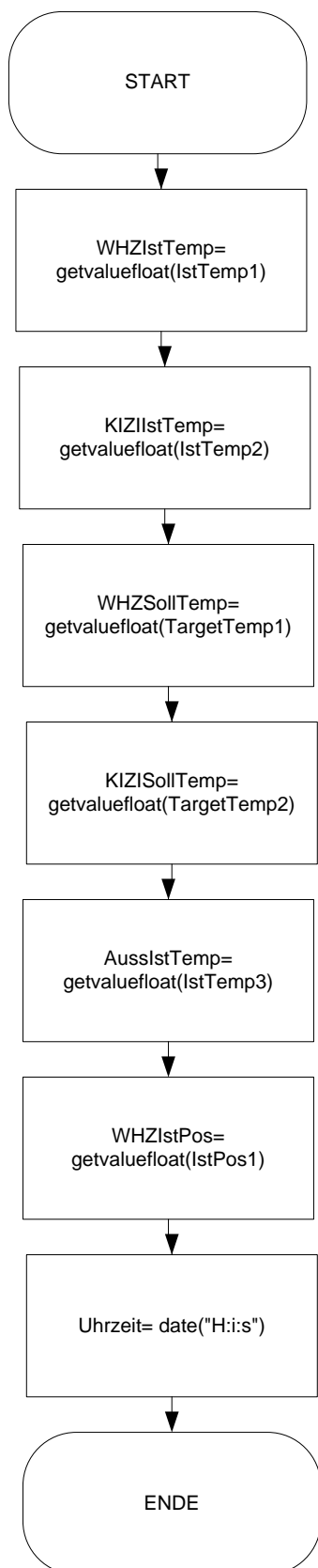


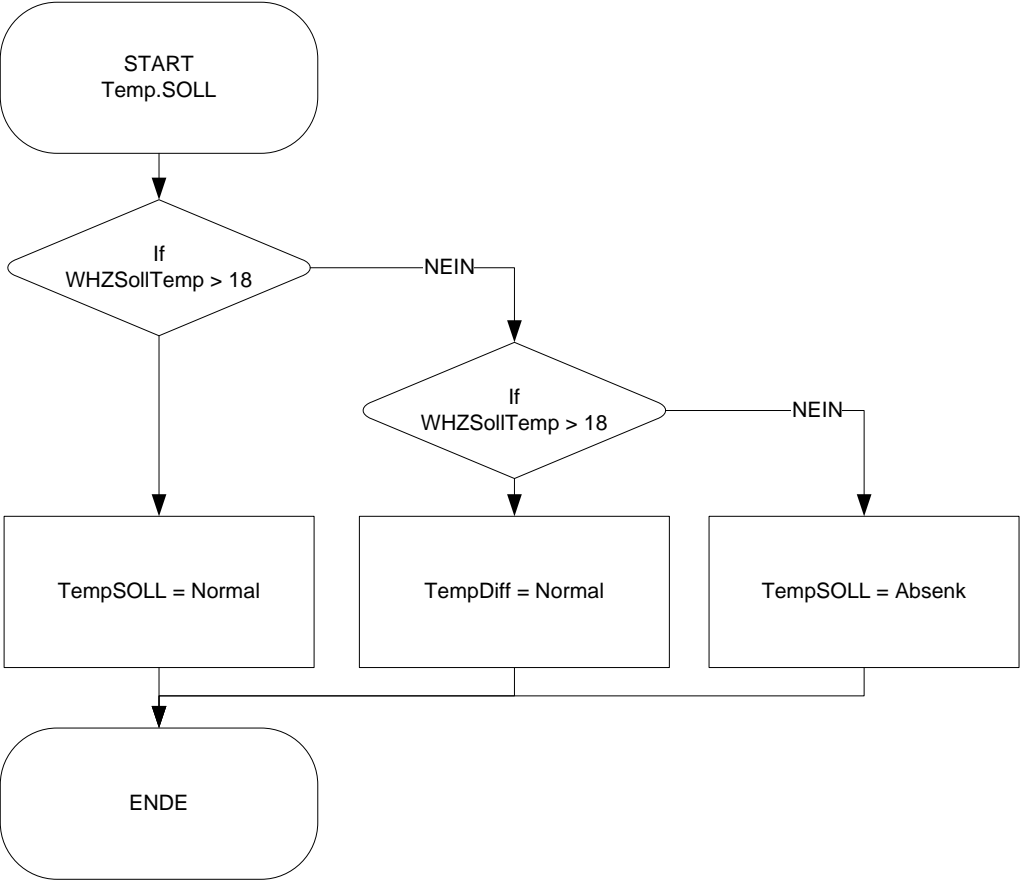
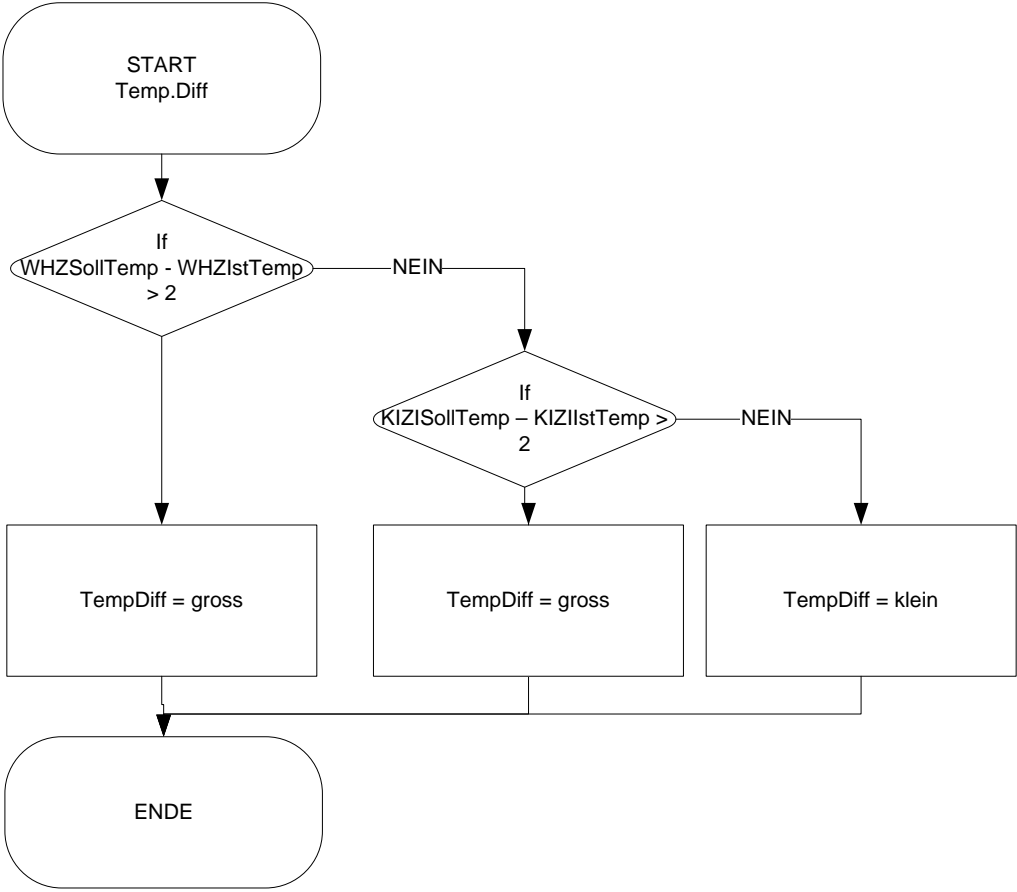
# General-Program-Übersicht



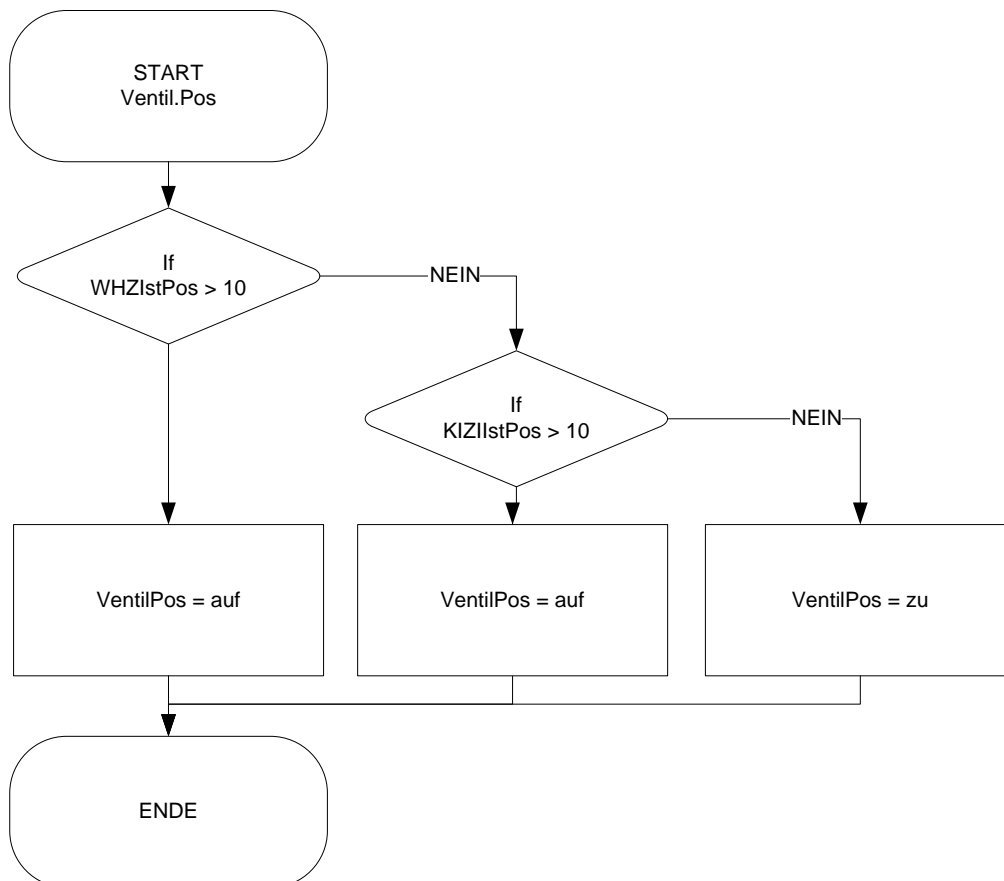
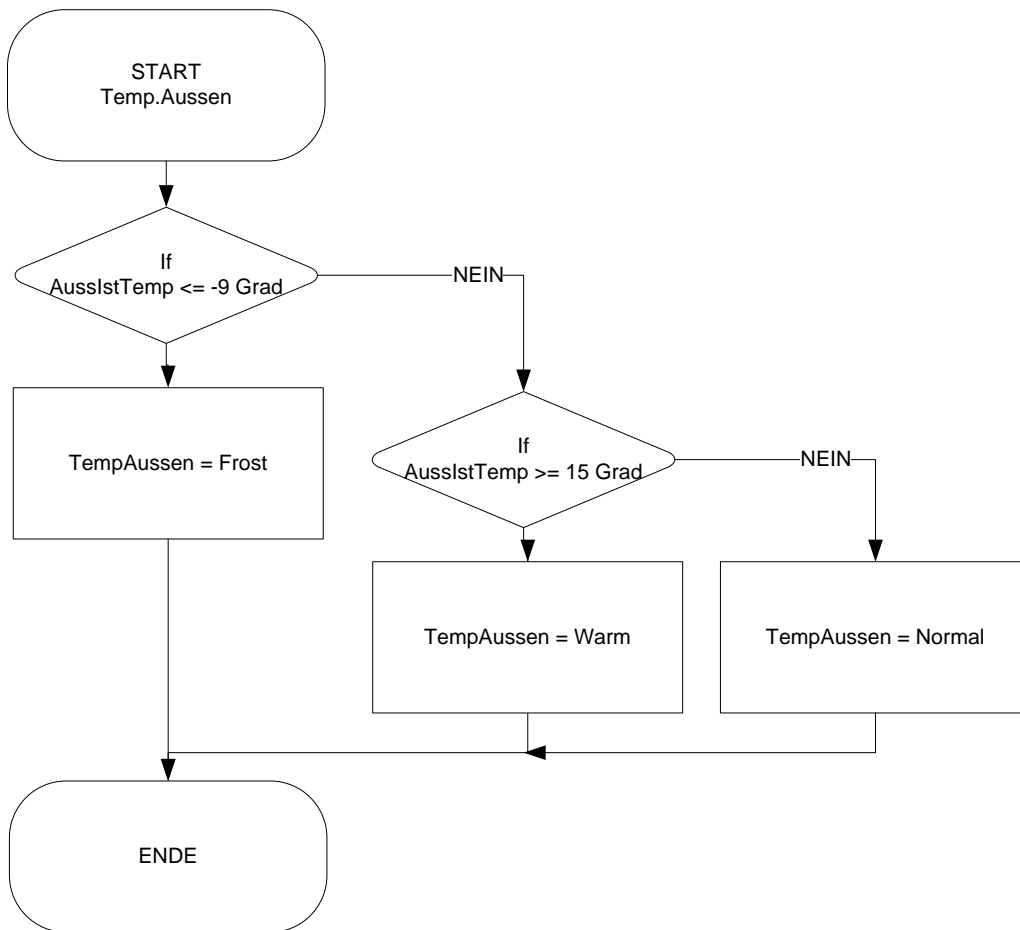
# Ermittlung der Werte



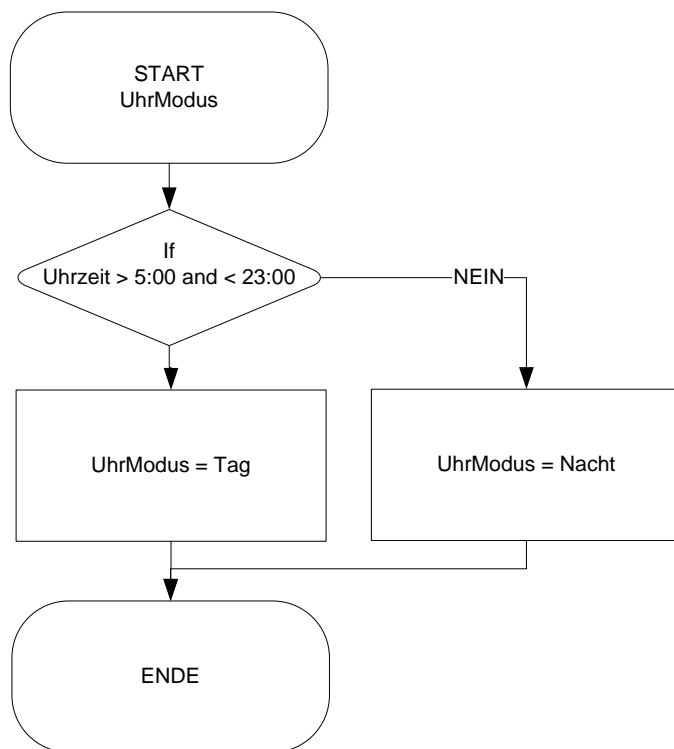
# Differenzermittlung 1



## Differenzermittlung 2



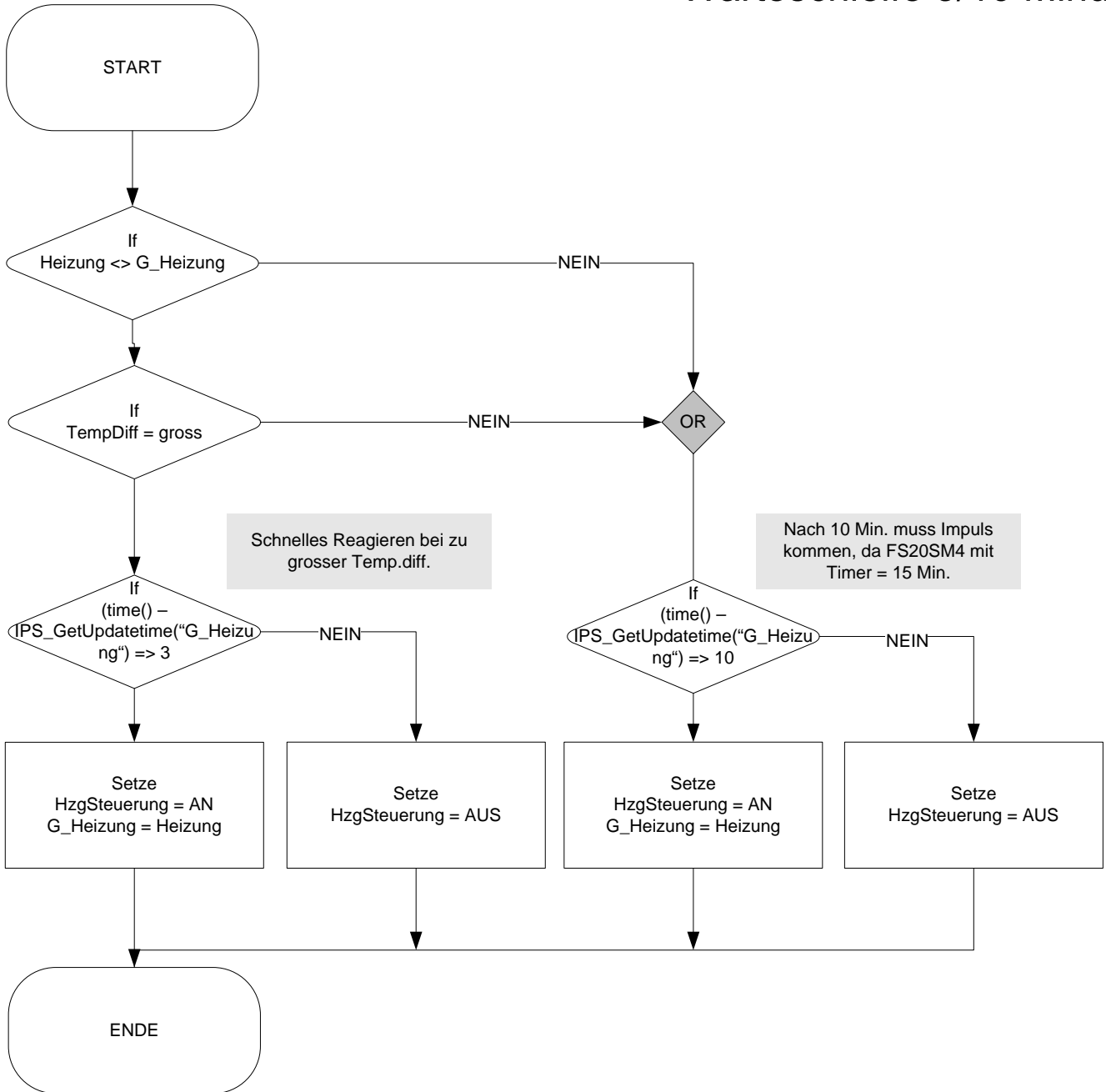
# Differenzermittlung 3



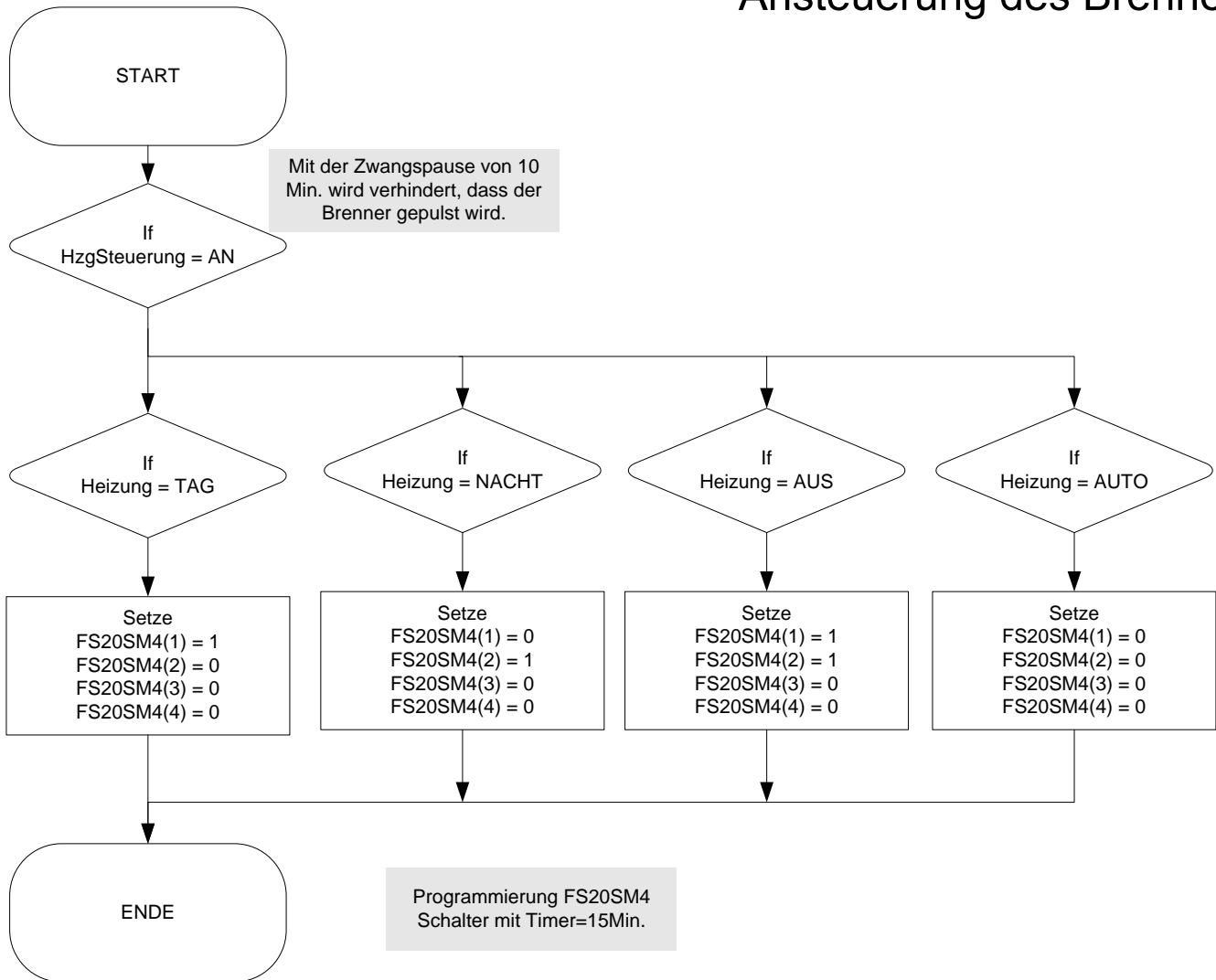
# Steuerungsprogramm



# Warteschleife 3/10 Minuten

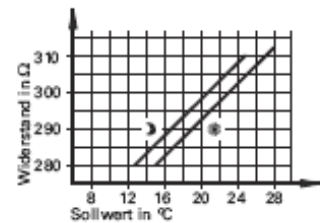
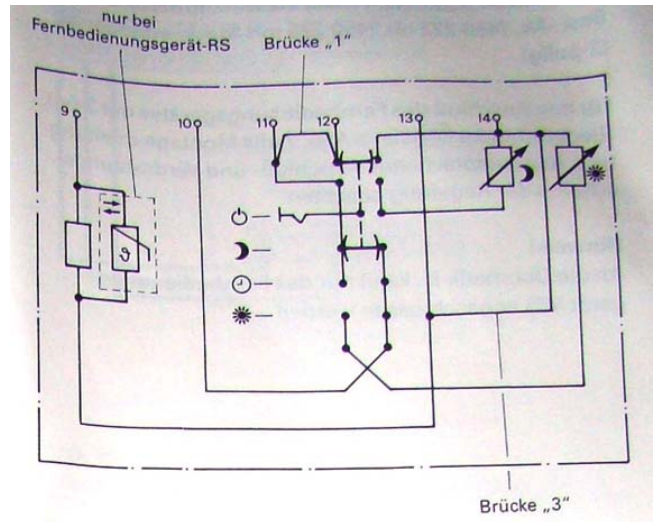
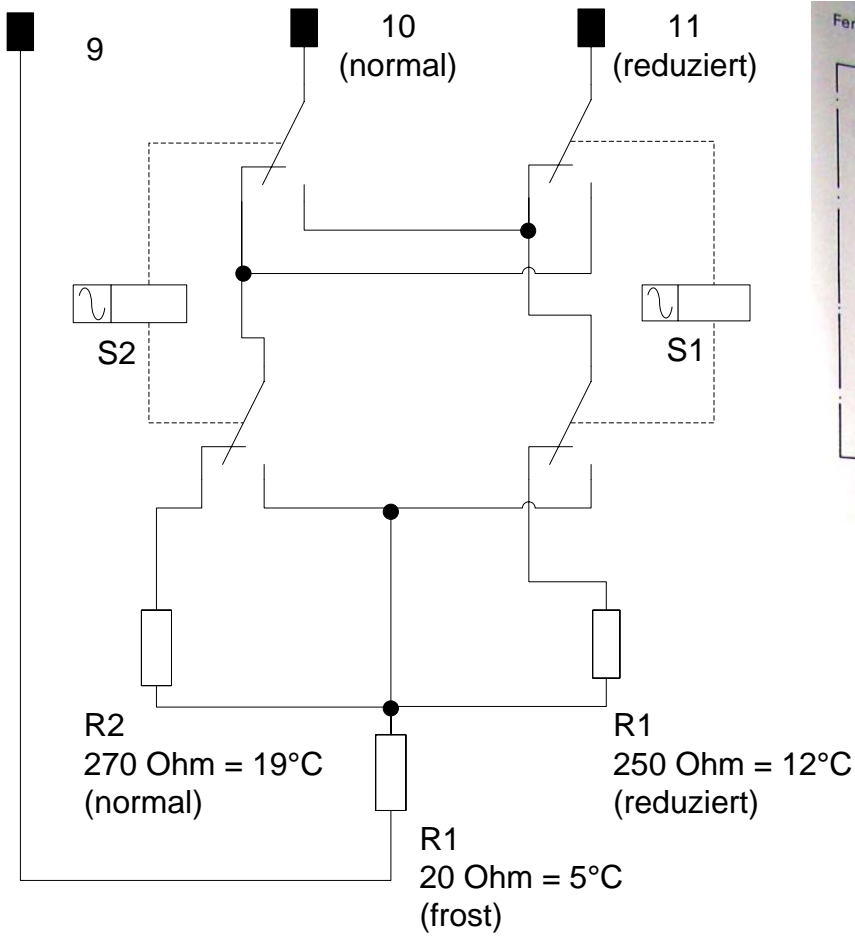


# Ansteuerung des Brenners





# Elektrischer Schaltplan Fernbedienungsgerät-WS für Trimatic-MC



Fernbedienungsgerät-WS  
 ● - Sollwert zwischen Klemme „9“ und „10“  
 ☾ - Sollwert zwischen Klemme „9“ und „11“

## Schaltverhalten:

Relais-S1	Relais-S2	(10)	(11)
0	0	N	R
1	0	N	N
0	1	R	R
1	1	F	F

← damit die HZg. bei einem Stromausfall den Regl.betrieb fährt

